

**SURVEY CONTROL DATA**

1. HORIZONTAL DATUM IS THE OKLAHOMA STATE PLANE COORDINATE SYSTEM, N.A.D. 83(2011) LAMBERT PROJECTION, NORTH ZONE ADJUSTED TO N.G.S. STATE PLANE COORDINATES, UTILIZING OPUS.

A. ACCURACY - 3RD ORDER OR BETTER

2. BEARINGS:

THE BEARINGS SHOWN HEREIN OR HEREON ARE GRID BEARINGS DERIVED FROM THE USC & GS OKLAHOMA PLANE COORDINATE SYSTEM AND ARE NOT ASTRONOMICAL.

3. VERTICAL CONTROLS:

A. LEVEL DATUM IS NGS, NAVD 88, TAKEN FROM ADJUSTED PRIMARY CONTROL UTILIZING DIFFERENTIAL LEVELING TECHNIQUES.  
B. ACCURACY - 3RD ORDER OR BETTER

LATITUDE 36° 00' 53"  
LONGITUDE 94° 32' 53"

**DESIGN DATA**

ADT 2017 - 100  
ADT 2037 - 149  
V - 45 M.P.H.  
Flex. ESALs - 0.11M

**SCALES**

PLAN 1:50  
PROFILE HOR. 1:50  
VER. 1:5  
LAYOUT MAP 1" = 5280'

**CONVENTIONAL SIGNS**

- PROPOSED ROADS
- SECTION LINES
- QUARTER SECTION LINES
- FENCES
- EXISTING GRADE
- EXISTING ROADS
- BASE LINE
- PROPOSED GRADE
- COMMUNICATION LINES (EXISTING)
- POWER LINES (EXISTING)
- GAS LINE (EXISTING)
- SANITARY SEWER LINES (EXISTING)
- WATER LINES (EXISTING)
- COMMUNICATION LINES (PROPOSED)
- POWER LINES (PROPOSED)
- GAS LINE (PROPOSED)
- SANITARY SEWER LINES (PROPOSED)
- WATER LINES (PROPOSED)
- BUILDINGS
- DRAINAGE STRUCTURES (EXISTING)
- DRAINAGE STRUCTURES (PROPOSED)
- RIGHT-OF-WAY LINES (EXISTING)
- RIGHT-OF-WAY LINES (PROPOSED)
- RIGHT-OF-WAY FENCE
- FLOWLINE (EXISTING)
- FLOWLINE (PROPOSED)
- TOE OF SLOPE (EXISTING)
- TOE OF SLOPE (PROPOSED)
- CITY LIMITS
- LANDSCAPE



STATE OF OKLAHOMA  
DEPARTMENT OF TRANSPORTATION

PLAN OF PROPOSED  
**COUNTY BRIDGE**

BRIDGE AND APPROACH PLANS

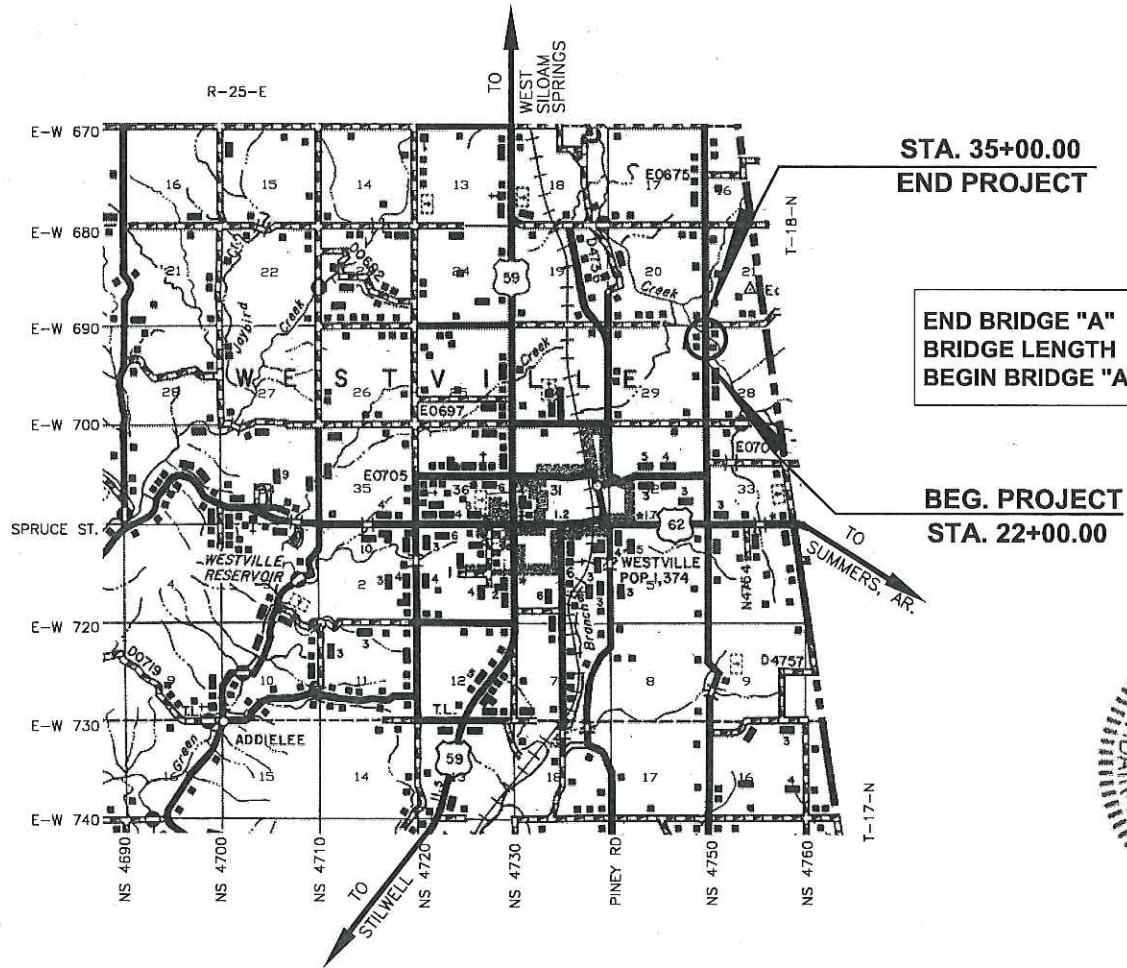
**BALLARD CREEK  
ADAIR COUNTY**

PROJECT NO. STP-201C(032)CI

STATE JOB NO. 29823(04)

LOCATION: 01N4750E0690001

REMOVE NBI NO. 10065 CONSTRUCT NBI NO. 31971



END BRIDGE "A" 29+31.55  
BRIDGE LENGTH 116.50'  
BEGIN BRIDGE "A" 28+15.05

BEG. PROJECT STA. 22+00.00



DESCRIPTION	REVISIONS	DATE
TITLE BLOCK UPDATED		10/11/17

**INDEX OF SHEETS**

SHEET NO.	DESCRIPTION
0001.	TITLE SHEET
0002.	TYPICAL SECTION AND MISCELLANEOUS DETAILS
AR01.-AR02.	SUMMARY OF PAY QUANTITIES AND GENERAL NOTES
B001.	BRIDGE "A" GENERAL PLAN & ELEVATION
B002.	BRIDGE "A" GEOTECHNICAL INFORMATION
B003.	ABUTMENT DETAILS
B004.	SUBSTRUCTURE EXCAVATION & PIPE ASSEMBLY DETAILS
R001.	STORM WATER MANAGEMENT PLAN
R002.	EROSION CONTROL PLAN
R003.-R004.	PLAN AND PROFILE, CRL
R005.	PLAN AND PROFILE, SHOOFLY
X001.-X012.	X - SECTIONS

THE FOLLOWING STANDARDS WILL BE REQUIRED FOR THIS PROJECT.

ROADWAY 2009	TRAFFIC 2009	2009 COUNTY BRIDGE
SSS-1-1	GRAU1-1-00	CB26-I-SKO-ABUT-PC5-01E
TSC2-3-2	GRH1-1-00	CB26-I-SKO-XSECT-PC5-01E
TSB-2-0	GRH2-1-00	CB26-I-SKO-LSECT-PCB-01E
TRFD-1-2	TCS1-1-01	CB26-I-SKO-DKSLB-BLIST-PCB-01E
PSE-1-0	TCS2-1-00	CB26-I-SKO-PCB-J-115-1-01E
PCES-4-1	TCS4-1-01	CB26-I-SKO-PCB-J-115-2-01E
SPI-4-1	TCS5-1-00	CB26-I-SKO-DIA-INTPR-PCB-01E
SPB-1-4	TCS6-1-02	CB26-I-SKO-BRG-PC5-01E
FHTMPP-1-0	TCS7-1-02	CB26-I-SKO-SPR-QUAN-PCB-1-01E
FHTCP-3-1	TCS8-1-00	CB26-I-SKO-AS-01E
PUD-3-2	TCS9-1-01	CB26..32-I-SKO-WING-PC5-01E
RDI-3-1	TCS10-1-00	CB26..32-C.I-SKO..30-PCB-DTL-1-01E
		CB26..32-C.I-SKO..30-PCB-DTL-2-01E
		CB26..32-C.I-SKO..30-GRU-BC-00E

2009 STATE BRIDGE  
TR3-2-01E  
HP1-2-01E

APPROVED  
ADAIR COUNTY BOARD OF COMMISSIONERS

*John Sandridge*  
DISTRICT NO. 1  
DATE: 4/17/17

*Kathy Davis*  
DISTRICT NO. 2  
DATE: 4-24-17

*Carol Harrison*  
DISTRICT NO. 3  
DATE: 4-24-17

PREPARED BY:  
CEC CORPORATION  
CA32 PE/LS 6/30/2018  
OKLAHOMA CITY, OKLAHOMA

*Aaron Finley*  
AARON FINLEY  
OKLA. REG. NO. 24264

10/11/17  
DATE

OKLAHOMA DEPARTMENT OF TRANSPORTATION	DEPARTMENT OF TRANSPORTATION FEDERAL HIGHWAY ADMINISTRATION
DATE APPROVED	DATE APPROVED
BY	BY
CHIEF ENGINEER	DIVISION ADMINISTRATOR
PROJECT NO. STP-201C(032)CI	SHEET NO. 0001

PROJECT LENGTH BASED ON C.R.L.  
ROADWAY LENGTH: ... 1,183.50 FT.... 0.224 MILES  
BRIDGE "A" LENGTH: ... 116.50 FT.... 0.022 MILES  
PROJECT LENGTH: ..... 0.246 MILES  
EQUATIONS: NONE  
EXCEPTIONS: NONE

KEITH DAVIS, COMMISSIONER, ADAIR COUNTY  
CAREY HARRISON, LOCAL GOVERNMENT DIVISION, OKLAHOMA DEPARTMENT OF TRANSPORTATION  
P.E. NO. 29823(01)